

W&H PEACOCK

AUCTIONEERS & VALUERS

Antique Furniture & Collectors' Items

VIEWING

Friday 26th June 9am to 8pm

Saturday 27th June 9am to 1pm

Thursday 2nd July 9am to 5pm

Morning of sale from 9am to 10am

AUCTION

Antique Furniture & Collectors' Items

Friday 3rd July

Commencing at 10am

CATALOGUE

Available online at

www.peacockauction.co.uk

INFORMATION FOR BUYERS

BUYER BEWARE

All lots in this sale are 'sold as seen' with any imperfections, faults or losses. No warranties are given. Bidders are deemed to be satisfied with the condition of any lots on which they bid.

CONDITION REPORTS

We regret that we are unable to process requests for reports received after 1.00pm on the day preceding the sale.

BUYERS PREMIUM

Buyers Premium at 17.5% plus VAT will be added to the bid price of each lot except lots purchased via the-saleroom.com which will be charged at 22.5% plus VAT.

PAYMENT

On successful purchase of items at auction, payment of your invoice should be made via any of the following accepted methods of payment as per our terms:

- Cash
- Debit card (in person)
- Direct bank transfer (details on invoice)

Note: We do not accept any form of credit card payment or any type of card payment over the telephone.

Attention is drawn to the Auctioneers Conditions of Sale. In particular, it is emphasised that all accounts must be settled on the day of sale. Please always remember that the lots purchased are at your own risk from the fall of the hammer, it is therefore in your own interest to get everything paid and collected as soon as possible.

COLLECTION

On sale day until 5pm and on the following Saturday, Monday and Tuesday 9am to 5pm.
The auctioneers may charge storage on items not cleared by this time.

DELIVERY SERVICE

Clients requiring delivery of furniture should enquire at the office.

POSTAGE & PACKING

Should you require items packed and posted please contact the Peacock Post team from Monday to Wednesday on 01234 608908 or shipping@peacockauction.co.uk

ONLINE REGISTRATION

In completing the online bidder registration you:

- I. Confirm that you have sufficient funds to complete any purchases.
- II. Agree to abide by the auctioneer's conditions of sale and terms and conditions.
- III. Agree to make payment by the methods and timescales stated above.
- IV. Understand that failure to make payment and to collect your purchases will lead to your accounts with the-saleroom.com and W&H Peacock being blocked, and that you will be liable for any expenses or losses incurred by the auctioneers.

COMMISSION BIDS

Purchasers may leave written instructions to bid with the auctioneers by email or telephone. Please note you must be registered in order to leave commission bids.

CLIENT REGISTRATION

We register all buyers and sellers with a permanent client number that can be used to buy or sell at our sales. To register there is a £10 charge and we require proof of identity and address such as a photographic driver's licence and a recent utility bill.

ARTIST RESALE RIGHT *ARR 2006

Certain picture lots in this sale may attract royalties under 'Artist Resale Right' legislation. Prospective purchasers must satisfy themselves as to whether or not a royalty payment applies to lots they are intending to buy. Where ARR royalties apply the buyer agrees to pay the auctioneer an amount equal to the resale royalty and we undertake to the buyer to pay this sum to the artist's collection agent.

Please enquire for further information.

GLOSSARY OF TERMS OF WORKS OF ART

Terms used in this catalogue have the following meanings.

Please note that all statements in this catalogue, regarding authorship, attribution, origin, date, age, provenance and condition are statements of opinion and are not treated as a statement of fact.

1. A N ARTIST

In our opinion, the work is by the artist.

2. ATTRIBUTED TO A N ARTIST

In our opinion, the work is of the period of the artist which may be whole or in part the work of the artist.

3. STUDIO, (CIRCLE OR WORKSHOP) OF A N ARTIST

In our opinion, the work is of the period and closely relates to his style.

4. SCHOOL OF A N ARTIST

In our opinion, the work is by a pupil or a follower of the artist.

5. MANNER OF A N ARTIST

In our opinion, the work is in the style of the artist and is of a later period.

6. AFTER A N ARTIST

In our opinion, this work is a copy of the artist.

7. ASCRIBED TO A N ARTIST

In our opinion, this work is not by the artist, however, previous scholarship has noted this to be a work by the artist.

8. SIGNED (OR DATED)

The work has a signature (or date) which is in our opinion is genuine.

9. BEARS SIGNATURE (OR DATE)

The work has a signature (or date) which in our opinion is not authentic.

ONLINE BIDDING IS
AVAILABLE VIA

the saleroom
The home of art & antiques auctions

W&H PEACOCK

AUCTIONEERS & VALUERS

CONDITIONS OF SALE

Affecting purchasers and others attending the sale premises.

1. Purchasers will be deemed:
 - a) To have inspected their lots prior to the sale; and
 - b) To have accepted that lots are sold with all faults and imperfections specifically mentioned or not irrespective of whether they bid in person, by commission, online or through an agent.
2. All goods are second hand and sold without warranty unless otherwise stated in the sale catalogue or by the auctioneer from the rostrum. Any implied warranty, condition or other term is excluded except where to do so would be unlawful.
3. The auctioneers undertake that care has been taken to see that catalogue descriptions are accurate and reliable however these are matters of opinion only and shall not be taken to be statements of fact.
4. The auctioneers act as agents to the vendor and shall not incur liability to any purchaser for any statement, representation or warranty as to title, quality or otherwise of any lot made on behalf of and with the vendor's authority. Likewise the auctioneers shall incur no liability to a purchaser arising from any defect in goods sold save in the event of negligence on the part of the auctioneers or their employees. Any liability therefore shall be a matter for dispute between purchaser and vendor only.
5. The auctioneers reserve on behalf of themselves and the vendors the following rights:
 - a) To sell subject to a reserve price
 - b) To bid on behalf of a vendor and/or purchasers
 - c) To refuse any bid
 - d) To rearrange, consolidate, divide, add or withdraw any lots or vary the order of the sale.
 - e) To exclude any person from the premises if there be good reason to do so.
6. The auctioneer shall regulate the bidding and shall determine from time to time the appropriate increment needed to advance the bidding.
7. The person making the highest accepted bid shall be the purchaser as defined in these conditions.
8. If a dispute arises as to any bidding then at the discretion of the auctioneer either:
 - a) The lot to which the disputed bid relates shall immediately be offered again, or
 - b) The auctioneer shall determine the dispute and his decision shall be final and binding on all parties
9. a) At the fall of the hammer the purchaser is required to give their Client Registration Number. If they have bid on behalf of another person or company they should make this clear to the auctioneer at the time. If they fail to do so then they will be held personally liable for the purchase under the terms of these conditions.
 - b) If, and as required by the auctioneer at the fall of the hammer, the purchaser shall pay to the auctioneer all or part of the purchase price plus VAT and buyers' premium.
 - c) Any such payment made at the fall of the hammer may be treated, at the auctioneers' discretion, as a general deposit against all purchases, made by that purchaser on the day.
 - d) All lots must be paid for in cash, or in other manner acceptable to the auctioneers, on the day of sale and before delivery is given.
 - e) Failure by the purchaser to comply with sub clause a) and b) shall entitle the auctioneer to cancel the sale and, at his discretion, to immediately re-offer the lot in question for sale by auction.
10. No transfer of lots or sub-sale by any purchaser is recognised by the auctioneers. Purchasers shall remain liable under these conditions in respect of their own purchase under the hammer.
11. Private treaty sales shall be subject to these conditions of sale where applicable.
12. All lots will be at the purchaser's risk from the fall of the hammer. Purchasers are therefore advised to check that they have adequate insurance cover.
13. Purchasers will not normally be permitted to remove goods until their payment has cleared through the bank. Whether removal is permitted or not, ownership of goods will not be deemed to pass to the purchaser until their payment has cleared.
14. All lots must be cleared from the sale premises at the purchaser's expense by the time stipulated or agreed by the auctioneers.
15. a) If a purchaser fails to comply with any of the preceding conditions the auctioneers may cause the lot in respect of which the failure is made to be resold by public or private sale without warranty or reserve and without notice to the purchaser.
 - b) If upon resale a lower price is obtained for any lot than was obtained on the first sale, the difference in price together with all costs and charges attending the resale shall be a debt due from the purchaser in default at the first sale.
 - c) Alternatively the auctioneers may, at their discretion, store the lot and recover reasonable charges for so doing from the purchaser.
16. All Sales shall be deemed to have been made in England and the Parties to the Sale hereby submit to the jurisdiction of the English Courts. English Law shall be the proper law of the Contract of Sale.

W&H PEACOCK

AUCTIONEERS & VALUERS

Bedford Auction Centre
Eastcotts Park
Bedford MK42 0PE

+44 (0) 1234 266 366
www.peacockauction.co.uk

6

Auction Details
July 2026 | Antique Furniture & Collectors' Items



Furniture



1



6



5



8



13



11

1 A Maitland Smith coffee table in the form of three large leather bound books, with three drawers, w. 91.5 cm **£100 - £150**

2 A Victorian figured walnut, satinwood strung and marquetry Sutherland table on turned supports, cabriole feet and castors, 89 x 97 cm, h. 64 cm **£50 - £70**

3 A 19th century walnut sewing box of casket form, with relief foliate panels, cylindrical carved corner columns, on a turned shaft, castellated platform base and four bun feet, 39 x 30 x 87 cm **£100 - £150**

4 A Georgian-style mahogany tripod table, the surface with shell and scrolled borders, on a turned column, three splayed legs and ball and claw feet, 67 x 56 x 67 cm **£40 - £60**

5 A Victorian mahogany firescreen with fretwork pediment, barley twist columns and cabriole legs inset with an embroidered tapestry panel, h. 137 cm, w. 91 cm **£50 - £80**

6 An 18th century style mahogany serpentine fronted settee with three scrolled splats, over a shaped apron, on acanthus capped cabriole legs with pad feet, w. 166 cm **£100 - £200**

7 A 19th century ebonised, gilt metal mounted and boule work writing table or bonheur-du-jour, the fall-front enclosing a fitted interior, over a shaped apron, on cabriole legs, 66 x 42 x 91 cm **£200 - £300**

8 An 18th century walnut, crossbanded and oyster veneered cutlery box with satinwood circulars and swirls to the surface, opening to reveal a later felt lined interior, 43 x 33 x 11 cm **£300 - £500**

9 A 19th century mahogany tilt-top table, the beadwork surface on a turned pillar, platform base and turned ball feet, 102 x 61 x 73 cm **£100 - £150**

10 A Victorian satinwood compactum, the two panelled doors enclosing a vacant interior with a single rail, over two short and two long drawers, on a plinth base, 130 x 57 x 212 cm **£60 - £80**

11 An 18th century and later oak two-part chest with five various long moulded drawers, panelled sides, on block feet, 109 x 57 x 117 cm **£200 - £300**

12 An oak 'Apprentice' chest of drawers with bone handles on bracket feet, 41 x 24 x 43 cm **£60 - £80**

13 A Black Forest style moulded pet house typically modelled as a chalet, 51 x 47 x 44 cm **£250 - £350**



17

14 A George III mahogany, walnut crossbanded and satinwood strung tea table, on square tapering legs with castors, w. 92 cm, h. 71 cm **£60 - £80**

15 A George III mahogany, crossbanded and satinwood strung tea table, the square straight legs with marquetry decoration, on castors, w. 92 cm, h. 71 cm **£60 - £80**



18

16 An oak refectory type table, the planked surface over carved a frieze, one end with inverted carving, on turned column supports joined by stretchers, 122 x 66 x 73 cm **£100 - £200**

17 A 19th century oak hall chair in the 17th century manner, with a heavily carved back over an upholstered seat, with acanthus capped scrolled arms, on turned legs joined by an X-stretcher **£150 - £200**

18 An early 19th century mahogany and satinwood strung cellarette or box-on-stand with satinwood oval panels, campaign handles to the sides and square tapering legs, the vacant interior with a baize lining, 35 x 26 x 60 cm **£150 - £200**



19

19 A late 17th century Wainscott chair, the panelled back surmounted by a carved pediment, the arms with later turned columns to support a child's restraint, on turned front legs **£200 - £300**

20 An 18th century and later oak side chair with a shaped splat, drop-in seat and cabriole legs on pad feet **£40 - £60**

21 A late Georgian mahogany open armchair with a drop-in seat, on square legs joined by a cross stretcher **£30 - £50**



22

22 A 19th century mahogany cellarette with a brass two-way campaign handle to the surface, the interior with baize partitions, brass badge for 'H.H. Dobson, Silversmith & Jeweller, 32 Piccadilly London', on an associated stand with tapering legs, 29 x 29 x 62 cm **£150 - £200**

23 A pair of Victorian oak and bergère hall chairs, the foliate splats with barley twist columns to either side **£60 - £80**



24

24 A George III mahogany and crossbanded lowboy, the shaped apron with three drawers, on cabriole legs with ball and claw feet, 76 x 43 x 73 cm **£200 - £250**

25 A Victorian oak and gilt highlighted wall mirror of castellated form inset with a bevelled plate, 58 x 47 cm **£40 - £60**

26 A Sheraton Revival satinwood and marquetry oval galleried table, the surface with swag carvings, on splayed legs joined by a second tier, 70 x 56 x 75 cm **£100 - £150**

27 A late 17th/early 18th century oak six-plank coffer or hutch with chamfered edges, the interior with a candle holder to one side, on slab feet, 107 x 42 x 52 cm **£150 - £200**

28-50 Spare Lots

Retro Video Games & Consoles

TO BE SOLD BY LIVE AUCTION

Saturday 29th August 2026

Commencing at 10am

We are now inviting entries for this forthcoming specialist sale. If you own anything which you think might be suitable we are happy to give complimentary auction advice. Please contact auctioneer Harry Shiner on 01234 266 366 or retro@peacockauction.co.uk

SALE ENTRIES NOW INVITED

Bedford Auction Centre
Eastcotts Park, Wallis Way, Bedford, MK42 0PE
01234 266 366 or info@peacockauction.co.uk

peacockauction.co.uk



Works of Art



LORE SCOTLAND L M

IT'S QUICKER BY RAIL

Particulars from LNER or LMS Offices and Agencies



51



52



56



54 (pt)

51 A China War Medal 1900, uninscribed *Please note that VAT will be added to the hammer price of this lot **£150 - £200**

52 An Elizabeth II Imperial Service Medal, an OSM with Afghanistan clasp and a GSM with Malaya clasp, all cased (3) *Please note that VAT will be added to the hammer price of this lot **£100 - £150**

53 A group of First and Second World War medals including a Volunteer Star, eight Victory, two War and eight 1939-45 War medals (19) *Please note that VAT will be added to the hammer price of this lot **£80 - £120**

54 A George III sampler, pictorial, alphabetical and poetical, named 'Phebe Jubeher Work age 12 year 1808', unframed, 39 x 34 cm **£50 - £80**

55 A late 19th century carriage timepiece, the porcelain dial with Arabic numerals within a gilt metal relief surround, in a brass and five-glass case, h. 15 cm incl. handle **£60 - £80**

56 A pair of bisque risqué figures modelled as ladies in their swimwear, w. 13 cm **£30 - £40**

57 A pair of 20th century brown-patinated twin-handled vases relief decorated in the Chinese manner, h. 23 cm **£80 - £120**



59 (pt)



60 (pt)

58 A double-sided enamelled bus or tram destination plate or sign for 'Wembley Park' and 'Harrow', 62 x 10 cm, together with a ledger and other railway ephemera **£100 - £150**

59 An extensive collection of Wembley related books and ephemera including street plans, tickets, football programmes, 1948 Olympic Games pamphlet and monochrome stills/photographs (many with Olympic Photo Association stamps and details), invoices, circus programmes, letters etc. (Qty) **£200 - £300**

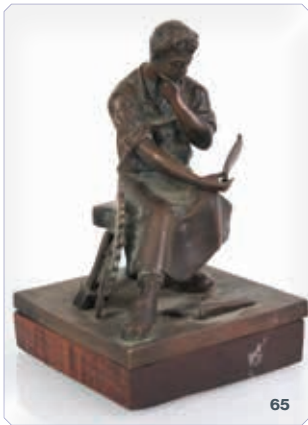
60 A collection of 1924/25 British Empire Exhibition, 1951 Festival of Britain and other similar ephemera, souvenirs and collectables including badges, matchbox holders, booklets, penknives, album of postcards, Adams mug, Norman Franks ashtray, tins, British Empire Games 1934 medallion, cased combination opera glasses etc. (Qty) **£250 - £300**

61 A Torchlight & Searchlight Tattoo, Stadium Wembley 1925, pot and cover by Ashted Potters, di. 13 cm **£100 - £150**

62 An advertising paperweight modelled as a seated lion by The Leeds Fireclay Co. Ltd., w. 11 cm, h. 13 cm, together with a blue glazed model of the Wembley Lion (2) **£60 - £100**

63 A Victorian walking cane with silver mount and marble pommel, London 1888 **£50 - £70**

64 A leather and brass mounted gun case with impressed marks 'B.A.G., R. Berks Regt.' to the surface, the interior with a red fitted lining, 83 x 22 x 9 cm **£80 - £120**



65

65 After Von Füllborn, a brown-patinated figure modelled as a seated engineer, signed, no foundry mark, on a wooden mount, h. 17 cm **£50 - £80**

66 An ebony box containing a group of fountain pens, two with 14ct gold nibs and a whistle, together with a cast metal three-tier pen stand and a vintage stapler (Qty) **£80 - £120**

67 A cased pair of 9ct gold spectacles together with three further pairs of spectacles, a cased cheroot holder and a cased Austrian silver-mounted pipe (6) **£150 - £200**



69 (pt)

68 A 19th century travelling chessboard with bone chessmen, together with a similar chess board and a Refuge Swiss musical box modelled as a grand piano, playing Tristesse - Chopin (3) **£30 - £50**

69 A Church Lads Brigade belt mounted with various cap badges, together with a group of other loose badges, a Territorial Efficiency Medal awarded to 823778 A.G. Ferguson RA, Second World War Defence & War Medals, Africa & Italy Stars, car badges etc. (Qty) **£100 - £150**

70 A 20th century Chinese Export cast metal censor with two handles and a relief decorated body, di. 17 cm incl. handles **£80 - £120**



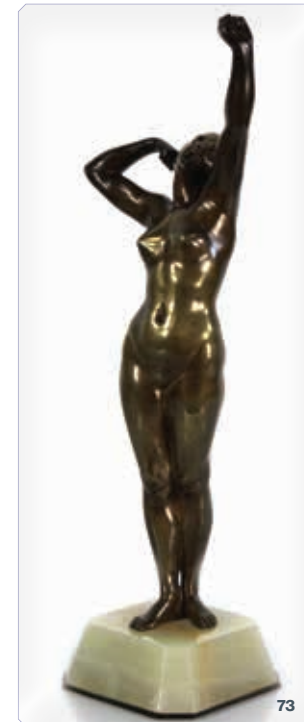
72

71 A hexagonal bowl bearing a Daoguang seal mark, di. 19 cm, h. 9 cm, together with a pair of Chinese brown-patinated spelter pricket candlesticks, h. 25 cm (3) **£100 - £150**

72 Yves Lohe (b. 1947), a polished and patinated bronze modelled as a pair of ballerina dancers, signed 'Lohe' to the circular base, h. 39 cm **£150 - £200**



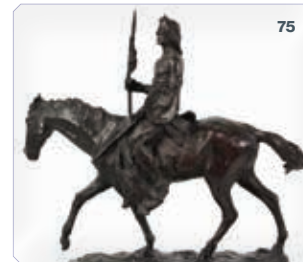
78



73

73 An Art Deco patinated bronze figure modelled as a nude female awakening, on a marble plinth, unsigned, h. 42 cm **£250 - £300**

74 A pair of gilt metal garnitures or open footed bowls, each with a pair of handles and bodies relief decorated with fruiting vines, h. 12 cm, w. 18 cm **£40 - £60**



75

75 A bronze sculpture modelled as a Native American seated on horseback, initialled RC, on a marble plinth, w. 39 cm, h. 37 cm **£100 - £150**

76 A 20th century bronze sculpture modelled as a seated bison, unsigned, on a marble plinth, w. 34 cm, h. 21 cm **£100 - £150**

77 A 19th century French mantle clock, the movement stamped 'RM' and striking on a bell, the 3.5 inch enamelled dial with Roman numerals, within a gilt metal figural case and scrolled feet, h. 36 cm, w. 38 cm, with an associated glass dome **£100 - £150**

78 A late 19th century brass skeleton clock signed 'Smith & Sons. St John's Square, Clerkenwell', the pierced dial with Roma numerals, with a fusee movement, pierced spire plates and anchor escapement, on a marble base and ebonised stand, under a glass dome **£500 - £600**



79 (detail)



83 (pt)



81 (pt)

79 A late 19th century Swiss cylinder music box with three bells playing on eight airs, the interior with a paper label marked 'Lith Picard - Lion, Geneve', within a rosewood, strung and marquetry case of typical form, 43 x 27 x 23 cm **£150 - £200**

80 An ornamental model of an antiques rifle together with a reproduction model of a pistol (2) **£20 - £30**

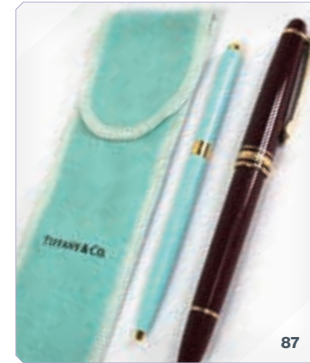
81 A Victorian coromandel and brass bound travelling vanity box by C Betjemann & Sons, the fitted interior with a drop-down mirror, ten cut glass bottles and holders with silver-gilt lids, London 1871, 318 grams, and a mother-of-pearl handled manicure set, over a bottom drawer, the bottom drawer with brass plaque inscribed 'Hall & Co., 56 King St Manchester', 32 x 24 x 20 cm **£600 - £800**

82 The Beatles memorabilia including Fan Club 'Third Christmas Record', Beatles Ltd. booklet 1964, 1994 calendar, National Newsletters No. 5 and 7 etc. (8) **£50 - £70**

83 A pair of Mappin & Webb, Paris, mother-of-pearl opera glasses together with a mother-of-pearl penknife with a silver blade (2) **£60 - £80**

84 A large collection of 19th and 20th century pipes, cheroot holders, clay pipes etc. together with a box of Whitecross mouthpiece replacements (Qty) **£100 - £150**

85 A group of nine treen pipe rests, pipe racks, cigarette dispensers etc. (9) **£60 - £80**



87

86 A large collection of cigarette cases, novelty lighters, smoking stands, cigarette cards, penknives etc. including a table lighter modelled as a Jaguar (Qty) **£100 - £150**

87 A Mont Blanc Meisterstück fountain pen with a 14ct gold nib together with a Tiffany & Co ballpoint in a slip case (2) **£100 - £150**

88 A 20th century Chinese cast metal incense burner together with a pair of foo dogs (3) **£30 - £50**

89 After Wassily Kandinsky (Russian 1866-1944), a cotton-on-cotton wall hanging, with certification, 63 x 91 cm **£60 - £80**

90 After Paul Klee (Swiss-German, 1879-1940), a cotton-on-cotton wall hanging, with certification, 63 x 91 cm **£60 - £80**



91 (detail)

91 Montague Birrell Black (1884-1964), a lithograph advertising poster for 'LNER Explore Scotland LMS', 101 x 126 cm **£200 - £300**

92 A cased pair of taxidermy pikes in a naturalistic setting, 61 x 31 x 17 cm **£40 - £60**

93 A 19th century faux tortoise shell and yellow metal mounted snuff box together with a mother-of-pearl inlaid black lacquered snuff box (2) **£50 - £70**

94 A 19th century walnut, satinwood and rosewood marquetry panel depicting a mother and child, framed, 22 x 21 cm **£50 - £80**

95 A cased pair of Sheaffer pens including one with a 14ct gold nib **£40 - £60**

96 A Regency rosewood and brass inlaid writing slope with campaign handles, 35 x 25 x 12 cm **£60 - £80**

97 A 20th century oak smokers cabinet, the pair of doors enclosing four drawers and a removable barrel bearing a plaque 'From the teak of HMS Iron Duke, Admiral Jellicoe's Flag Ship Jutland 1916', cabinet 36 x 23 x 36 cm **£80 - £120**

98 A First World War Royal Engineers helmet with painted decoration 'France 1916-1918' **£50 - £80**

99 - 100 Spare Lots

W&H PEACOCK
AUCTIONEERS & VALUERS

Mid Century Design

TO BE SOLD BY AUCTION

Friday 21st August Commencing 10am

Viewing Friday prior 9am to 8pm, Saturday prior 9am to 5pm, Thursday prior 9am to 5pm and morning of sale from 9am

Mid Century classic designed furniture and collectables have proved to be very popular with buyers looking for something out of the ordinary to furnish their homes. Our contemporary sales are jam-packed with British, Scandinavian and American designs by 'outside of the box' thinkers of the 1950s through to the present day.

FORTHCOMING SALES ENTRIES INVITED

Bedford Auction Centre
Wallis Way, Bedford, Bedfordshire, MK42 0PE
01234 266 366 or design@peacockauction.co.uk

peacockauction.co.uk



Collectable Toys





101



109

101 A limited edition Steiff fully jointed 'Replica 1907 Brown' bear, h. 70 cm, ltd. ed. 1198/5000, boxed and with certificate **£80 - £120**

102 A limited edition Steiff fully jointed 'Replica 1905 Red Brown' bear, h. 50 cm, ltd. ed. 3009/6000, boxed and with certificate **£40 - £60**

103 A limited edition Steiff fully jointed 'Burgundy' bear, h. 40 cm, ltd. ed. 995/3000, boxed and with certificate **£40 - £60**

104 A limited edition Steiff fully jointed 'Leiterwagen' bear with wagon, h. 30 cm, ltd. ed. 656/3000, boxed and with certificate **£40 - £60**

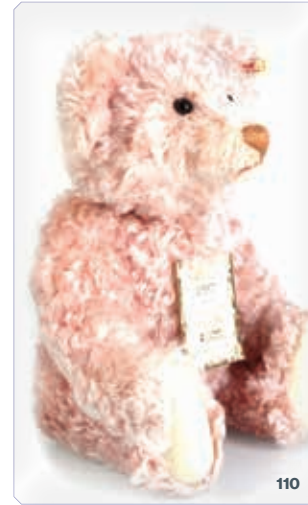
105 A limited edition Steiff fully jointed 'Year 2000' bear, h. 40 cm, ltd. ed. 012524, boxed and with certificate **£40 - £60**

106 A limited edition Steiff fully jointed 'City Soldier' bear, h. 35 cm, ltd. ed. 1007/2000, boxed and with certificate **£40 - £60**

107 A limited edition Steiff fully jointed 'Heide Shepherd' bear, h. 35 cm, ltd. ed. 1178/2000, boxed and with certificate **£40 - £60**

108 A limited edition Steiff fully jointed 'Fisher' bear, h. 35 cm, ltd. ed. 862/2000, boxed and with certificate **£40 - £60**

109 A limited edition Steiff fully jointed 'Year 2000' bear, h. 32 cm, ltd. ed. 04433, boxed and with certificate **£40 - £60**



110



114



117

110 A limited edition Steiff fully jointed 'Teddy Bear Rose' bear, h. 38 cm, ltd. ed. 583/3000, boxed and with certificate **£40 - £60**

111 A limited edition Steiff fully jointed 'Teddy Bear Grey' bear, h. 36 cm, ltd. ed. 2922/3000, boxed and with certificate **£40 - £60**

112 A limited edition Steiff fully jointed 'Scottish Teddy Bear 2001' bear, h. 32 cm, ltd. ed. 1103/3000, boxed and with certificate **£40 - £60**

113 A limited edition Steiff fully jointed 'Irish Teddy Bear' bear, h. 35 cm, ltd. ed. 310/2000, boxed and with certificate **£40 - £60**

114 A limited edition Steiff fully jointed 'Scottish Bear' bear, h. 30 cm, ltd. ed. 1080/3000, boxed and with certificate **£40 - £60**

115 A limited edition Steiff fully jointed 'Carline Thistle' bear, h. 34 cm, ltd. ed. 1394/2000, boxed and with certificate **£40 - £60**

116 A limited edition Steiff fully jointed '2002' bear, h. 35 cm, ltd. ed. 1386/4000, boxed and with certificate **£40 - £60**

117 A limited edition Steiff fully jointed 'Pirate' bear, h. 33 cm, ltd. ed. 508/1500, boxed **£40 - £60**

118 A limited edition Steiff fully jointed 'U Pitchoun' bear, h. 35 cm, ltd. ed. 1243/2000, boxed and with certificate **£40 - £60**

119 A limited edition Steiff fully jointed 'Peter' bear and goat, h. 32 cm, ltd. ed. 638/1500, boxed and with certificate and bag **£40 - £60**

120 A limited edition Steiff fully jointed 'Teddy Bear with Roloplan' bear, h. 30 cm, ltd. ed. 308/2000, boxed and with certificate **£40 - £60**

121 A Steiff fully jointed 'Classic' bear, h. 41 cm, boxed **£30 - £50**



131 (pt)

122 A limited edition Steiff fully jointed 'Teddy Bear with elephant stencil' bear, h. 28 cm, ltd. ed. 489/1904, boxed and with certificate **£30 - £50**

123 A limited edition Steiff fully jointed 'Teddy Bear in a Boot' bear, h. 21 cm, ltd. ed. 1641/4000, boxed and with certificate **£30 - £50**

124 A limited edition Steiff fully jointed 'Anni' bear, h. 24 cm, ltd. ed. 924/1500, boxed and with certificate **£30 - £50**

125 A limited edition Steiff fully jointed 'Christmas Sledge set 2002' bear set, h. 16 and 9 cm, ltd. ed. 1089/3000, boxed and with certificate **£30 - £50**

126 A limited edition Steiff fully jointed 'Winter' bear and sledge, h. 21 cm, ltd. ed. 724/4000, boxed and with certificate **£30 - £50**

127 A limited edition Steiff fully jointed 'Gardening' bear, h. 21 cm, ltd. ed. 1020/4000, boxed and with certificate **£30 - £50**

128 A Steiff fully jointed 'Classic' bear wearing a floral dress, h. 21 cm, boxed **£30 - £50**

129 A Steiff plush camel, h. 24 cm, boxed **£20 - £30**

130 A set of four Steiff bears, each depicting a season, each boxed (4) **£60 - £100**

131 Twelve limited edition miniature fully jointed Steiff bears 1999-2011 (excluding 2006), mostly boxed (12) **£120 - £150**

132 Five miniature Steiff fully jointed bears including an 'I Love You' example (5) **£50 - £80**

133 Two plush Steiff bears, each with a luggage case (2) **£20 - £30**

134 A limited edition fully jointed Steiff '2012' bear, h. 21 cm **£20 - £30**

135 A fully jointed Steiff 'Leo' bear, h. 22 cm **£20 - £30**

136 A fully jointed Steiff bear, h. 39 cm **£20 - £30**



142

137 A fully jointed Steiff 'Classic' bear, h. 50 cm **£30 - £50**

138 A limited edition fully jointed Big Softies 'Bertie' bear, h. 47 cm, ltd. ed. 143/250 boxed and with certificate **£20 - £30**

139 Five collectors bears including a Gisela Hofmann example, a Charlie Bear, a Howigs bear and two others (5) **£60 - £100**

140 A Tri-ang Minic No. 2 musical car, boxed **£20 - £30**

141 A Hornby O gauge No. 101 tank passenger set, boxed, together with a selection of rolling stock including wagons, coach, signal, bridge track etc. (qty) **£80 - £120**

142 A large scale live steam model of the Evening Star 92220 2-10-0 loco and tender, approx. measurements: loco l. 118 cm, w. 24 cm, h. 35 cm, tender: l. 67 cm, w. 24 cm, h. 35 cm, distance between wheels 12 cm **£3000 - £5000**

143 A partially completed large scale live steam 0-2-0 loco, approx. measurements: l. 66 cm, w. 25 cm, h. 44cm, distance between wheels 12 cm **£300 - £500**

144 A Tower Brass gauge 1 mark 1 coach, boxed **£50 - £80**

145 A Tower Brass gauge 1 mark 1 coach, boxed **£50 - £80**

146 A Tower Brass gauge 1 mark 1 coach, boxed **£50 - £80**

147 A Tower Brass gauge 1 mark 1 coach, boxed **£50 - £80**

148 Nine packs of Peko Streamline 1 standard gauge SL-800 track (9) **£100 - £150**

149 One pack of Peko Streamline SM-32 narrow gauge SL-600 track and a pack of O gauge SL-700BH track (2) **£20 - £30**

150 Spare Lot



W&H PEACOCK
AUCTIONEERS & VALUERS

Wines & Spirits

TO BE SOLD BY AUCTION

Friday 14th August Commencing 10.30am

Viewing: Friday Prior 9am - 5pm, Thursday Prior 9am - 5pm, morning of sale from 9am

Our Wine & Spirit sales include a fantastic array of whisky, gin, rum & other spirits, liqueurs, port, wine, champagne & sparkling wine, beer and cocktails

FORTHCOMING SALES ENTRIES INVITED

Bedford Auction Centre

Wallis Way, Bedford, Bedfordshire, MK42 0PE

01234 266 366 or wine@peacockauction.co.uk

peacockauction.co.uk



Ceramics &
Pictures





155

151 A Shelley six sitting tea/coffee service comprising: 6 x tea cups, 6 x coffee cups, 6 x tea saucers, 6 x coffee saucers, 6 x side plates, 1 x sandwich plate, 1 x coffee pot, 1 x milk jug, 1 x cream jug, 1 x sugar bowl and 1 x slops bowl, each decorated with crocus and butterflies (qty) **£80 - £120**

152 A French part dessert service comprising three tazza and sixteen side plates, each decorated with floral sprays within turquoise borders, d. 23.5 cm (19) **£60 - £100**

153 A Loetz Papillon vase of slender shouldered form, h. 6.5 cm, together with a further Loetz Orchis vase of scalloped form, larger (2) **£80 - £120**

154 A Royal Crown Derby cabinet plate, d. 27 cm, a pair of side plates, d. 16 cm, two saucer dishes and a pair of tea cups (7) **£80 - £120**

155 A Royal Worcester ewer of squat form decorated with blackberries in fruit, signed M Blake, h. 19.5 cm, together with a pot pourri and spill vase decorated with roses (3) **£200 - £250**

156 A pair of Japanese Export two handled vases gilt decorated with coastal landscapes in the famille verte palette, h. 28.5 cm (2) **£80 - £120**

157 A Canadian Confederate pitcher relief decorated with a typical landscape, Chief head and coat of arms, h. 25 cm **£30 - £50**

158 A jardiniere/vase of shouldered form decorated with cloisonne style motifs in the Arabic manner, h. 35 cm **£40 - £60**

159 An oval wall mirror decorated with putti and floral sprays in the manner of Meissen, h. 55 cm **£60 - £100**

160 - 170 Spare Lots



171

171 Robert Sydney Rendle Wood (1895-1987), Five Boats, Mevagsissey signed, oil on panel, 46 x 54.5 cm *Please note: VAT at 20% will be added to the bid price of this lot **£150 - £200**

172 After Cecil 'John' Brack (1920-1999), 'Bartender', coloured lithograph, 19 x 25.5 cm, together with another work after the same hand (2) **£30 - £50**

173 Clifford Edgar Levi Knight (1930-2016), Study of a derelict barn, unsigned, mixed media, 37.5 x 53.5 cm **£30 - £50**

174 Richard Bawden (b. 1936), 'Flowers & Patchwork', signed and numbered 2/150, etching and aquatint, 50.5 x 40.5 cm **£250 - £350**



174

175 Rui Paes (Portuguese, b.1957), Three studies for the book 'Lotsa de Casha' by Madonna, signed and dated 2003, pencil sketches, largest 31.5 x 24.5 cm, together with a copy of the book (4) **£80 - £120**

176 Michael Hunter (contemporary), 'Hallelujah Hallelujah', signed and numbered 15/200, coloured etching, 10 x 30 cm, together with a further engraving of a Durham Cathedral (2) **£30 - £50**



179

177 Herbert Davis Richter (British, 1874-1955), 'Narcissi in Blue Vase', signed, watercolour, 25 x 26.5 cm **£200 - £300**

178 Henry Moore, OM, CH, FBA, RBS (British, 1898-1986), Composition for a poem by Herbert Read - They came running over the perilous sands... signed in pencil and numbered V/X, etching and aquatint, 34.5 x 27.5 cm **£200 - £300**

179 Chas.. (Early 20th century School), Bustling café scene on the Grand Canal, Venice, indistinctly signed, oil on canvas, 48 x 74 cm **£150 - £200**

180 After Gabriel Metsu, Figures in a domestic setting, unsigned, oil on tin, 11.5 x 8.5 cm **£150 - £200**



180



181



185

181 David Green (d. 2011), 'Great Barford from Old Mills', signed, inscribed verso and dated 1983, watercolour, 49 x 71 cm **£50 - £80**

182 David Green (d. 2011), 'Late Autumn Sunshine at Olney, Bucks', signed, inscribed verso and dated 1981, watercolour, 49 x 71 cm **£40 - £60**



183



186

183 David Green (d. 2011), 'Harrold Village Green, Bedfordshire', signed, inscribed verso and dated 2002, watercolour, 34 x 50.5 cm **£40 - £60**

184 David Green (d. 2011), 'Thatch at Ickwell Green, Beds', signed, inscribed verso, watercolour, 34.5 x 51 cm **£40 - £60**

185 David Green (d. 2011), 'Radwell, Beds', signed, inscribed verso, watercolour, 25 x 35 cm **£40 - £60**

186 David Green (d. 2011), 'Afternoon Sunshine at Sutton, Beds', signed, inscribed verso and dated 1980, watercolour, 34.5 x 51.5 cm **£40 - £60**



192



188



189

187 David Green (d. 2011),
'Stevington Village, Beds',
signed,
inscribed verso and dated 1981,
watercolour,
35 x 52 cm **£40 - £60**

188 David Green (d. 2011),
'Silsoe, Beds',
signed,
inscribed verso and dated 1989,
watercolour,
35 x 52 cm **£40 - £60**

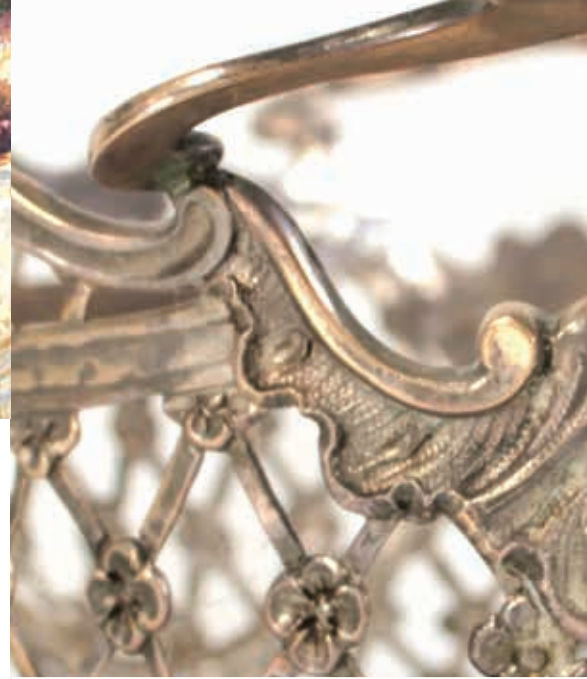
189 David Green (d. 2011),
'Ickwell Green, Bedfordshire',
signed,
inscribed verso and dated 1993,
watercolour,
26 x 36 cm **£40 - £60**

190 David Green (d. 2011),
'Cottages at Odell, Bedfordshire',
signed,
inscribed verso and dated 1980,
watercolour,
25.5 x 36 cm **£40 - £60**

191 David Green (d. 2011),
'Cottages at Keysoe, Bedfordshire',
signed,
inscribed verso and dated 1993,
watercolour,
25.5 x 36 cm **£40 - £60**

192 Xavier Sager (1881-1969),
Mediterranean coastal view,
signed,
oil on artists' board,
49 x 99 cm **£100 - £150**

193-200 Spare Lots



Silver & Plate





201



202



204



206

201 A pair of George III silver and parcel gilt old English pattern table spoons with brightcut engraving, maker GJ, London 1778, l. 21.5 cm, 134 gms (2) **£150 - £200**

202 A pair of George III silver old English pattern table spoons with beaded decoration, maker WF, London 1803, l. 22 cm, 111 gms (2) **£150 - £200**

203 A George IV Scottish silver fiddle pattern table spoon, maker GT, Glasgow 1824, l. 22.5 cm, together with a further silver fiddle pattern table spoon, overall 151 gms (2) **£150 - £200**

204 A set of four William IV silver fiddle pattern teaspoons, maker WRS, Exeter 1835, together with two further silver fiddle pattern teaspoons, overall 113 gms (6) **£100 - £150**

205 A set of four Victorian silver fiddle pattern teaspoons, maker HH, London 1871, overall 94 gms (4) **£80 - £120**

206 Two silver thimbles, Chester and Birmingham hallmarks, overall 8 gms (2) **£20 - £30**



211



208



210

207 A silver engine turned napkin ring, maker A&JZ, Birmingham 1929, together with two further silver napkin rings, various dates and makers, overall 95 gms (3) **£80 - £120**

208 A silver engine turned napkin ring, maker SLtd., Birmingham 1948, together with two further silver napkin rings, various dates and makers, overall 50 gms (3) **£50 - £80**

209 A cased set of six silver seal end teaspoons, maker CB&S, Sheffield 1925, overall 38 gms, together with a silver lidded dressing table bottle (2) **£50 - £80**

210 A silver handled magnifying glass, Walker & Hall, Sheffield 1927, l. 14 cm, together with a silver handled paper knife (2) **£40 - £60**

211 A silver engine turned cigarette case of rectangular form decorated with a map of Great Britain, maker JHW, Birmingham 1932, l. 11.5 cm, 153 gms **£150 - £200**

212 A silver engine turned and parcel gilt cigarette case of rectangular form, maker CSG & Co., Birmingham 1937, l. 11.5 cm, 147 gms **£120 - £150**

213 A silver cigarette case of cushioned rectangular form, maker WHH, Birmingham 1920, l. 8 cm, together with a further silver case, overall 123 gms (2) **£100 - £150**

214 An Anglo-Indian cigarette case of curved rectangular form enamel decorated with birds and animals, l. 12.5 cm, together with four further base metal and plated cigarette cases (5) **£60 - £100**

215 A late Victorian silver calling card case of typical form engraved with scrolls and foliate motifs, maker H&T, Birmingham 1896, l. 9 cm, 61 gms **£60 - £100**



217



229

216 An Edwardian silver mounted crocodile skin jewellery case, Birmingham 1901, w. 26 cm **£50 - £80**

217 A late Victorian silver hot water jug, makers marks indistinct, London 1891, h. 18 cm, 342 gms **£300 - £400**

218 A George II silver pepper of typical form, makers marks indistinct, London 1751, h. 11 cm, together with a further silver pepper, smaller, overall 103 gms (2) **£100 - £150**

219 Three silver propelling pencils, various dates and makers, max l. 12 cm (3) **£30 - £50**

220 A Victorian silver and mother of pearl fruit knife, maker IO, Sheffield 1845, l. 8 cm, a similar knife and a bade metal example (3) **£30 - £50**

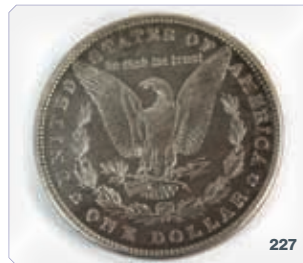
221 A set of eight silver bean end coffee spoons, maker JD WD, Sheffield 1924, a silver teaspoon with foliate bowl and a caddy spoon, overall 76 gms (10) **£60 - £100**

222 A silver and parcel gilt dish of modernist disc design, maker RAF, London 1975, d. 12.5 cm, 109 gms, together with a silver coin purse, Birmingham 1918 (2) *Please note: VAT @ 20% will be added to the bid price of this lot **£120 - £150**

223 A silver pin cushioned modelled as an elephant, Birmingham hallmarks indistinct, h. 3 cm **£30 - £50**

224 A silver pepper of ovoid form, maker GH, Sheffield 1917, h. 8.5 cm, together with a matching salt and a later spoon, overall 115 gms (2) **£120 - £150**

225 A group of silver and metalware comprising a cigarette case, two propelling pencils and a bracelet decorated with Parisian landmarks, overall 156 gms (4) **£120 - £150**



227



233

226 A pair of silver mounted coasters, maker MCH, London 2000, d. 11.5 cm, together with a further silver mounted coaster, larger (3) **£100 - £150**

227 An American dollar dated 1882 **£20 - £30**

228 An American dollar dated 1883 **£20 - £30**

229 A Victorian silver six slice toast rack of arched form, maker REA, Birmingham, 1843, w. 15.5 cm, 277 gms **£300 - £400**



235

230 A silver and mother of pearl rattle/teether, maker AL Ltd., Birmingham 1917, l. 10.5 cm, together with two further silver and metalware rattles and a locket (4) **£40 - £60**

231 Five silver thimbles, various dates and makers, together with a Charles Horner Dorcas thimble (6) **£30 - £50**

232 An Edwardian silver caddy of sarcophagus form, makers mark indistinct, Birmingham 1910, h. 10 cm, 142 gms **£150 - £200**

233 An Anglo-Indian metalware cigarette case, repousse decorated with scrolled foliate motifs, l. 9 cm, 97 gms **£50 - £80**

234 An Edwardian silver butter dish of shell form, l. 13.5 cm, together with a matching knife, Goldsmiths & Silversmiths Co. Ltd., London 1905, overall 105 gms, cased **£100 - £150**

235 A silver three piece cruet set of canted form, Viners, Sheffield 1959-1961, max h. 10.5 cm, together with a later spoon, overall 169 gms, boxed **£150 - £200**



242



243

236 Nine silver handled toasting forks, various dates and makers, together with a late Victorian mother of pearl handled and silver fork, B&S, Sheffield 1894, l. 21 cm and a silver fork blade (11) **£100 - £150**

237 A silver mounted six piece dressing table set, maker WA, Birmingham 1934, together with a pair of silver sugar nips and a silver teaspoon (8) **£120 - £150**

238 Six Georgian silver fiddle pattern salt spoons, various dates and makers, overall 58 gms (6) **£60 - £100**

239 A group of silver comprising a two handled trophy vase, h. 10.5 cm, a charm modelled as a lamp, a desk calendar, a bottle rim, a button hook and six silver handled butter knives, various dates and makers, weighable silver 82 gms, together with a metalware feather mounted pin (qty) **£100 - £150**

240 A gilt metal double ended scent bottle, l. 13 cm, cased **£30 - £50**

241 A mixed group of silver comprising four napkin rings, a hairbrush, a teaspoon, a mug, a torque style necklace, a bottle and a waisted cup, various dates and makers, weighable silver 223 gms (qty) **£250 - £300**

242 An Edwardian silver bowl with beaded border on a socle foot, Mappin & Webb, London 1909, d. 10.5 cm, 196 gms **£200 - £300**

243 An Edwardian silver sifter of typical canted vase shaped form, William Hutton & Sons, London 1910m h. 16 cm, together with a silver pepper, overall 157 gms (2) **£150 - £200**



244



251 (pt)



245



248

244 An Edwardian five piece cruet set, maker S & Co, Birmingham 1905, overall 148 gms, cased **£150 - £200**

245 Three pairs of silver sugar nips, various dates and makers, 87 gms (3) **£80 - £120**

246 A mixed group of silver comprising a Charles Horner thimble, three napkin rings and a salt mount, various dates and makers, overall 44 gms (5) **£40 - £60**

247 A silver handles cake slice, maker EV, Sheffield 1967, l. 29 cm and a toddy ladle (2) **£30 - £50**

248 Five silver vesta cases, various dates and makers, overall 122 gms (5) **£100 - £150**

249 A silver engine turned pill box of circular form, Elkington & Co, d. 4.5 cm, together with three further silver boxes, overall 74 gms (4) **£60 - £100**

250 Four silver napkin rings including an octagonal pair, maker BBS Ltd., Birmingham 1949 and two others, overall 86 gms (4) **£80 - £120**

251 Five Victorian and later silver teaspoons and a Dutch silver straining spoon, various dates and makers, overall 140 gms (6) **£120 - £150**



257



255 (pt)



256 (pt)



260

252 Four silver mounted dressing table bottles, a silver lid and a matchbox sleeve section, various dates and makers, weighable silver 23 gms (6) **£40 - £60**

253 A silver 'Owl Knopped' spoon, maker CJV, London 1973, l. 13.5 cm, 32 gms, cased **£30 - £50**

254 A silver cup with hare handle, maker S&M, Birmingham 1949, h. 9.5 cm, together with a pair of silver dwarf candlesticks, weighable silver 67 gms (3) **£60 - £100**

255 A Mordan & Co. gilt metal propelling pencil, three further base metal pencils and a yellow metal mounted scent bottle (5) **£30 - £50**

256 A belt buckle constructed from American five cent coins, w. 8.5 cm **£30 - £50**

257 A Victorian two handled basket of oval form decorated in the Rococo manner, silver maker FB, London 1882, w. 28 cm, 630 gms **£600 - £800**

258 Two silver pin dishes, each repousse decorated with a courting couple, import marks, max w. 12 cm, overall 84 gms (2) **£80 - £120**

259 A pair of silver pin dishes of oval form, each decorated with foliate motifs, maker FH, Sheffield 1973, w. 10.5 cm, overall 86 gms (2) **£80 - £120**

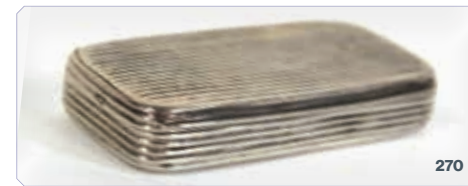
260 A silver dish of oval form decorated with scroll motifs, maker HU, Birmingham 1973, w. 15.5 cm, 85 gms **£80 - £120**



264



263



270

261 A pierced silver bowl of oval scalloped design, Chester hallmark indistinct, w. 20.5 cm, 177 gms **£150 - £200**

262 An Edwardian silver aide memoire engraved in the Neo-Classical manner, George Unite, Birmingham 1908, w. 10 cm, overall 132 gms, cased *Ivory Submission reference WMMJSJ4H **£120 - £150**

263 A Victorian silver case of cushioned rectangular form decorated in the Aesthetic Movement manner with brown watered silk interior, maker H&T, Birmingham 1894, l. 9.5 cm, overall 86 gms, cased **£80 - £120**

264 A silver parcel gilt and pale blue guilloché enamelled cigarette case of rectangular form, maker T&S, Birmingham 1935, l. 8 cm, together with a matching match sleeve case, overall 148 gms, in a Harrods case **£150 - £200**

265 A silver double sovereign case of cushioned oblong form, maker ALD, Birmingham 1938, l. 6 cm, together with a further silver sovereign case, overall 56 gms (2) **£80 - £120**

266 A Victorian silver double ended sovereign/vesta case with scroll engraving, maker TH, Birmingham 1900, l. 7 cm, 43 gms **£60 - £100**

267 A William IV silver and parcel gilt vinaigrette of rectangular form, engine turned within a foliate border, maker TS, Birmingham 1836, w. 4 cm, 33 gms **£80 - £120**

268 A silver and parcel gilt engine turned pill/snuff box of rectangular form, maker C&C, Chester 1919, w. 5.5 cm, 32 gms **£40 - £60**

269 A William IV silver and parcel gilt engine turned pill/snuff box of rectangular form, engine turned within a foliate border, maker WS, Birmingham 1833, w. 6.5 cm, 77 gms **£80 - £120**

270 A silver pill/snuff box of ridged oblong form, hallmarks indistinct, w. 6.5 cm, 40 gms **£40 - £60**



277

271 A George IV silver and parcel gilt vinaigrette of rectangular form with fern engraving, makers mark indistinct, London 1820, w. 2.5 cm, 11.6 gms **£60 - £100**

272 A silver and pale blue guilloche enamelled pill box of cushioned rectangular form, w. 3.5 cm, 21 gms **£30 - £50**

273 A silver, parcel gilt and pale blue guilloche enamelled cigarette case of rectangular form, Mappin & Webb, Birmingham 1940, l. 8 cm, 94 gms **£120 - £150**

274 A silver, parcel gilt and pale blue guilloche enamelled cigarette case of rectangular form, Goldsmiths & Silversmiths Co. Ltd., London 1935, l. 8.5 cm, 93 gms **£120 - £150**



278

278 A Victorian silver and parcel gilt calling card case engraved in the Neo Classical manner, maker JW, Birmingham 1881, l. 9.5 cm, 99 gms **£120 - £150**

279 A Victorian silver calling card case all over engraved with leavy motifs, Deakin & Francis, Birmingham 1890 l. 9.5 cm, 62 gms **£80 - £120**

280 A silver stamp case modelled as an envelope, maker C&N, Birmingham 1916, w. 2.7 cm, together with a metalware double stamp sleeve with sliding mechanism, overall 21 gms (2) **£30 - £50**



281

281 A Victorian silver and parcel gilt hip flask of cushioned rectangular form, maker WS, London 1864, l. 12.5 cm, 247 gms **£300 - £400**

282 An early 20th century silver and parcel gilt casket of sarcophagus form on four outswept ball feet, maker AP FP AP, London 1916, w. 12 cm, 340 gms **£350 - £400**

283 A George IV silver shell bowl caddy spoon, maker TN, London 1926, l. 9.5 cm, 11 gms **£30 - £50**

284 A 9ct yellow gold propelling pencil, maker A&C Ltd., London 1928, l. 8 cm, 11 gms **£150 - £200**



282

285 A Victorian silver and mother of pearl fruit knife, maker ME, Birmingham 1896, l. 7.5 cm and two similar knives (3) **£60 - £100**

286 A group of silver comprising a circular pin dish, maker FH, Sheffield 1969, d. 9.5 cm, a money clip, a napkin ring and a vesta case, overall 92 gms (4) **£80 - £120**

287 A late Victorian silver calling card case of curved form, all over engraved with scroll motifs, maker MB, Birmingham 1899, w. 8 cm, together with a similar silver sleeve, overall 61 gms (2) **£60 - £100**



284

288 A mixed group of silver comprising an oval dressing table box, maker JR Ltd., Birmingham 1901, w. 10.5 cm, a pepper and a pair of sugar nips, overall 136 gms (3) **£120 - £150**

289 Five silver and metalware propelling pencils and pencil sleeves by Mordan & Co., max l. 11 cm (5) **£50 - £80**

290 An Edwardian silver inkwell on a rectangular base decorated in the Rococo manner, maker DP, London 1904, w. 10 cm, 89 gms **£80 - £120**



292 (pt)



294



296



297

291 Four silver matchbox sleeves and a match book sleeve, various dates and makers (5) **£50 - £80**

292 Five silver and metalware matchbox sleeves, various dates and makers (5) **£50 - £80**

293 Four silver curblink watch chains, max. l. 35.5 cm, overall 112 gms, together with a gold plated example (5) **£100 - £150**

294 A silver double Albert watch chain with t-bar and suspending a medallion, medallion Birmingham 1925, l. 41 cm, 71 gms **£60 - £100**

295 A silver belcher link watch chain with t-bar and suspending a medallion, medallion Birmingham 1910, l. 35 cm, 62 gms **£60 - £100**

296 A silver curblink watch chain with t-bar and suspending a medallion, medallion Birmingham 1901, l. 39 cm, 51 gms **£50 - £80**

297 A silver graduated curblink watch chain with t-bar and suspending a vesta case, vesta Birmingham 1898, l. 43 cm, 60 gms **£60 - £100**

FORTHCOMING VALUATION DAY
16th July 2026

COMPLIMENTARY VALUATION ADVICE

PLEASE CONTACT US TO MAKE AN APPOINTMENT

Bedford Auction Centre
Eastcotts Park, Wallis Way, Bedford, MK42 0PE
01234 266 366 info@peacockauction.co.uk

peacockauction.co.uk

HAMMER PRICES - JUNE 2026

4	£160	84	£30	131	£35	184	£80	327	£95	402	£350	476	£50
5	£50	85	£70	132	£200	185	£180	328	£120	403	£660	477	£540
6	£35	86	£35	141	£50	186	£50	329	£260	404	£540	478	£300
7	£100	87	£150	142	£140	187	£40	330	£150	408	£650	479	£270
8	£100	88	£60	143	£100	188	£26	331	£120	409	£500	481	£750
9	£150	89	£30	147	£200	189	£26	332	£190	410	£950	482	£100
31	£240	90	£60	151	£2600	201	£340	333	£110	411	£700	483	£190
32	£140	91	£60	152	£2600	202	£50	334	£80	412	£700	484	£620
33	£170	92	£65	153	£2200	203	£190	335	£120	413	£660	485	£1500
34	£30	95	£130	154	£2100	206	£260	336	£120	414	£330	486	£4100
35	£55	96	£75	155	£850	207	£60	337	£140	415	£360	487	£230
36	£95	97	£170	156	£800	208	£800	338	£50	416	£660	488	£260
37	£75	99	£120	157	£950	209	£120	339	£60	417	£180	489	£560
38	£70	100	£55	158	£1300	212	£800	340	£100	418	£380	490	£600
39	£65	101	£100	159	£2500	300	£300	341	£100	419	£1300	501	£30
40	£60	102	£65	160	£170	302	£22	342	£140	420	£640	502	£300
42	£115	103	£20	161	£170	303	£260	343	£70	421	£850	503	£110
43	£220	104	£80	162	£190	304	£60	344	£65	422	£660	504	£480
51	£80	105	£100	163	£200	305	£60	345	£50	423	£320	505	£150
52	£60	106	£80	164	£95	306	£45	346	£65	451	£1900	506	£120
54	£150	108	£200	165	£85	307	£220	347	£80	452	£210	507	£900
55	£140	109	£40	166	£90	308	£45	348	£55	453	£620	508	£150
56	£120	111	£150	167	£90	309	£160	349	£80	454	£100	509	£250
59	£170	112	£60	168	£90	310	£55	350	£26	455	£60	510	£150
60	£90	114	£30	169	£90	311	£35	351	£22	456	£120	511	£200
61	£130	115	£200	170	£95	312	£150	352	£50	457	£90	512	£75
62	£60	116	£22	171	£85	313	£100	353	£340	458	£40	513	£600
63	£65	117	£45	172	£1900	314	£45	354	£40	459	£45	514	£160
64	£55	118	£85	173	£2000	315	£70	355	£50	460	£480	515	£150
65	£50	119	£60	174	£2100	316	£55	356	£85	461	£150	516	£150
67	£65	120	£65	175	£200	317	£130	357	£1000	462	£2500	517	£230
70	£75	121	£26	176	£1800	318	£65	358	£85	465	£50	518	£175
74	£200	123	£850	177	£50	319	£95	359	£25	466	£130	519	£95
76	£200	124	£150	179	£110	321	£60	360	£170	471	£320	520	£180
77	£260	125	£14	180	£160	322	£95	361	£65	472	£100	521	£80
79	£320	126	£28	181	£60	324	£70	362	£460	473	£170	522	£170
81	£50	127	£35	182	£75	325	£130	363	£260	474	£420	523	£240
83	£160	130	£110	183	£120	326	£70	364	£70	475	£360	524	£50

525	£110	567	£480	607	£200	653	£360	695	£80	736	£130	777	£120
526	£125	568	£300	608	£440	655	£340	696	£190	737	£120	778	£200
527	£120	569	£200	609	£640	656	£1300	697	£170	738	£270	779	£180
528	£110	570	£270	610	£160	657	£340	698	£260	739	£320	780	£190
529	£90	571	£140	611	£240	658	£520	699	£100	740	£220	781	£180
530	£380	572	£270	612	£65	659	£400	700	£290	741	£260	782	£130
531	£170	573	£250	613	£750	661	£220	701	£140	742	£200	783	£70
532	£130	574	£200	614	£140	662	£500	702	£900	743	£220	784	£50
533	£95	575	£170	615	£150	663	£60	703	£2000	744	£380	785	£500
534	£70	576	£270	616	£250	664	£100	704	£190	745	£150	786	£370
535	£40	577	£360	617	£70	665	£420	705	£840	746	£55	787	£340
536	£500	578	£180	618	£110	666	£80	706	£920	747	£230	788	£120
537	£200	579	£170	619	£100	667	£35	707	£185	748	£45	789	£110
538	£100	580	£80	620	£85	668	£140	708	£300	749	£140	790	£55
539	£220	581	£75	621	£1350	669	£150	709	£170	750	£70	791	£900
540	£140	582	£240	622	£660	670	£420	710	£1800	751	£60	792	£280
541	£230	583	£200	623	£230	671	£350	711	£950	752	£110	793	£360
542	£290	584	£95	625	£1100	672	£150	713	£340	753	£130	794	£90
543	£220	585	£65	627	£400	673	£90	714	£130	754	£260	795	£250
544	£80	586	£65	628	£1050	674	£135	715	£150	755	£100	796	£290
545	£190	587	£160	629	£1500	675	£110	716	£95	756	£100	797	£220
546	£45	588	£160	630	£540	676	£95	717	£90	757	£75	798	£290
547	£880	589	£400	633	£260	677	£160	718	£170	758	£860	799	£280
548	£240	590	£140	634	£560	678	£150	719	£80	759	£160	800	£480
550	£160	591	£270	635	£85	679	£180	720	£55	760	£45	801	£95
551	£400	592	£80	636	£1250	680	£150	721	£160	761	£40	802	£35
552	£400	593	£230	638	£160	681	£250	722	£150	762	£50	803	£100
553	£45	594	£900	639	£210	682	£205	723	£170	763	£800		
555	£190	595	£980	641	£260	683	£1400	724	£150	764	£750		
556	£270	596	£920	642	£340	684	£210	725	£380	766	£55		
557	£640	597	£660	643	£120	685	£180	726	£160	767	£400		
558	£30	598	£210	644	£95	686	£165	727	£190	768	£160		
559	£210	599	£120	645	£50	687	£150	728	£130	769	£350		
560	£450	600	£110	646	£320	688	£120	729	£120	770	£360		
561	£200	601	£1000	647	£150	689	£140	730	£200	771	£300		
562	£280	602	£100	648	£400	690	£135	731	£250	772	£660		
563	£120	603	£300	649	£380	691	£140	732	£120	773	£170		
564	£320	604	£60	650	£110	692	£110	733	£120	774	£290		
565	£410	605	£150	651	£220	693	£180	734	£120	775	£250		
566	£400	606	£540	652	£120	694	£40	735	£160	776	£250		

W&H PEACOCK

AUCTIONEERS & VALUERS



Book Your Group's Auction Experience for 2026

W&H Peacock invites associations and groups to experience our popular Auction Insight Events at the Bedford Auction Centre throughout 2026. Choose from daytime or evening sessions, with catering and refreshments available from our on-site café.

Evening Events (40-70 guests) Perfect for larger groups, our evening sessions offer an engaging insight into the auction world in a relaxed atmosphere.

Daytime Events (20-40 guests) Ideal for smaller groups seeking a more intimate experience with our expert team.

Visit www.peacockauction.co.uk/services/auction-insight

Bedford Auction Centre

Wallis Way, Bedford, Bedfordshire, MK42 0PE
01234 266 366 or marketing@peacockauction.co.uk

peacockauction.co.uk